

ENGLISH LANGUAGE INSTITUTE

SERVICES PORTFOLIO



ENGLISH LANGUAGE INSTITUTE (ELI) SERVICES PORTFOLIO

Copyright 2024. English Language Institute (ELI) at Princess Nourah
bint Abdul Rahman University (PNU) All rights reserved.

CONTENTS

1

About the ELI

2

Mission & Vision

3

Core Values

4

International Academic Accreditation

5

Milestones

6

ELI Partnerships

7

Projects & Collaborations

8

Services

9

Contact Us



About the ELI

The ELI: Empowering Excellence in English Language Education at Princess Nourah bint Abdulrahman University

H.E. the Minister of Education issued the Decree No. 685, dated 16/06/1439 AH, approving the establishment of the English Language Institute (ELI) in Princess Nourah bint Abdulrahman University (PNU) in March 2018.

As a cornerstone of PNU's strategic objectives, the ELI stands as a beacon of educational distinction. We are committed to delivering exceptional learning outcomes and elevating the English language learning process to rival renowned international institutions.

Aligned with the Kingdom's Vision 2030, our institute takes pride in equipping students with the knowledge and essential skills necessary for thriving in future job prospects. By enhancing students' English language proficiency, offering enriching student activities, and embracing social and community responsibility, we seamlessly integrate them into the dynamic skills system of the 21st century, ensuring their readiness for success in an ever-evolving global landscape, aligning perfectly with the vision set forth by Saudi Vision 2030.

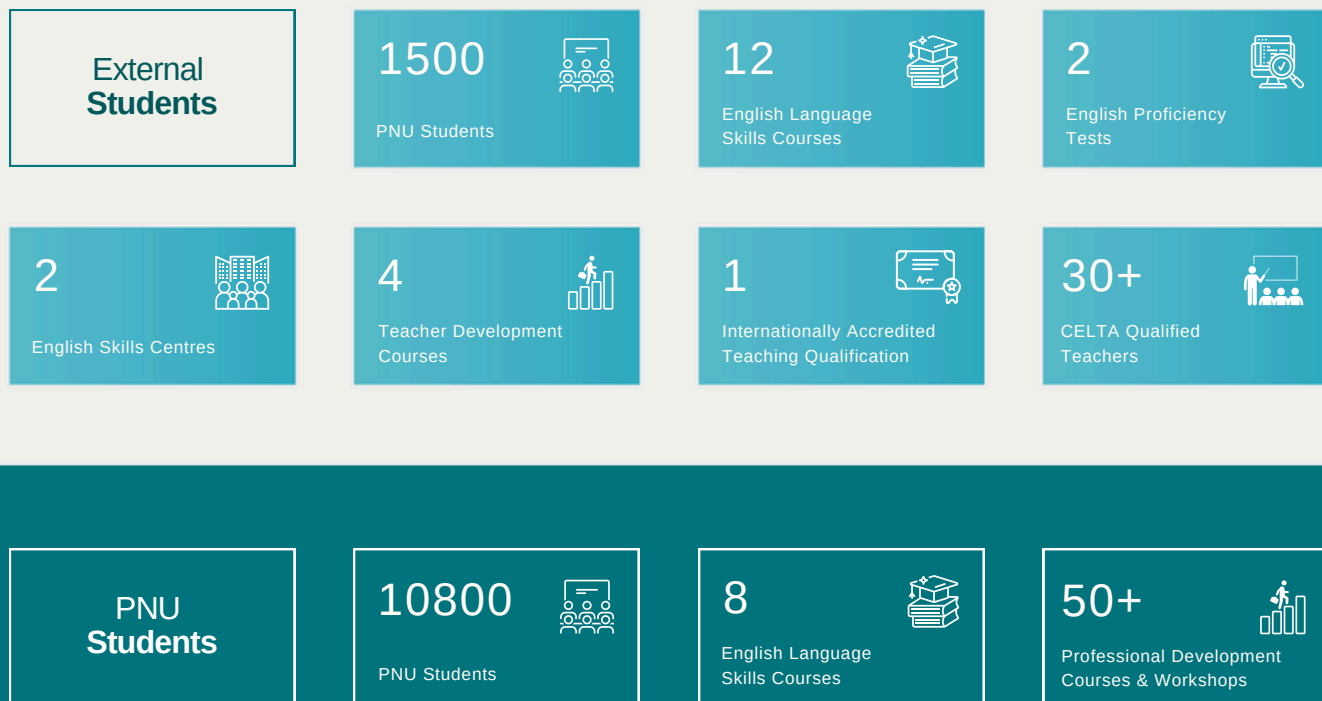


ELI's Annual Figures

The ELI proudly serves a diverse range of stakeholders, delivering English language courses to an annual average of over 12300 students. Additionally, it provides professional development courses and workshops to over 250 teachers and professionals from various fields.

As an authorised Cambridge English Centre, the ELI equips over 30 individuals with a CELTA qualification every year, offering them the gateway to a new career or career advancement in teaching.

The ELI serves both PNU students and teachers, as well as external individuals and organisations, with an unwavering commitment to excellence.





Mission & Vision



Providing excellent programs in English Language Education with national and international partnerships that support scientific research and contribute to an enriched knowledge-based economy.

A pioneer Institute in English Language which enhances the efficiency of community members with knowledge and sustainable development.





Our Core Values



Pioneering



Excellence



Professionalism



Innovation

At the ELI, our Mission and Vision are driven by core values that guide us every step of the way.



“**Education** in Saudi Arabia is the main pillar in which we fulfill the aspirations of our people for **progress** and **advancement** in science and knowledge.”

Custodian of the Two Holy Mosques
King Salman bin AbdulAziz AlSaud



International Academic Accreditation

The ELI became the first Institute, under the umbrella of the Ministry of Education, to attain accreditation from the prestigious European organisation, EAQUALS.

EAQUALS is a world leader in accreditation for language teaching organisations and their accreditation is the gold standard for language centres and a highly-respected badge of excellence.



CEA
Accreditation



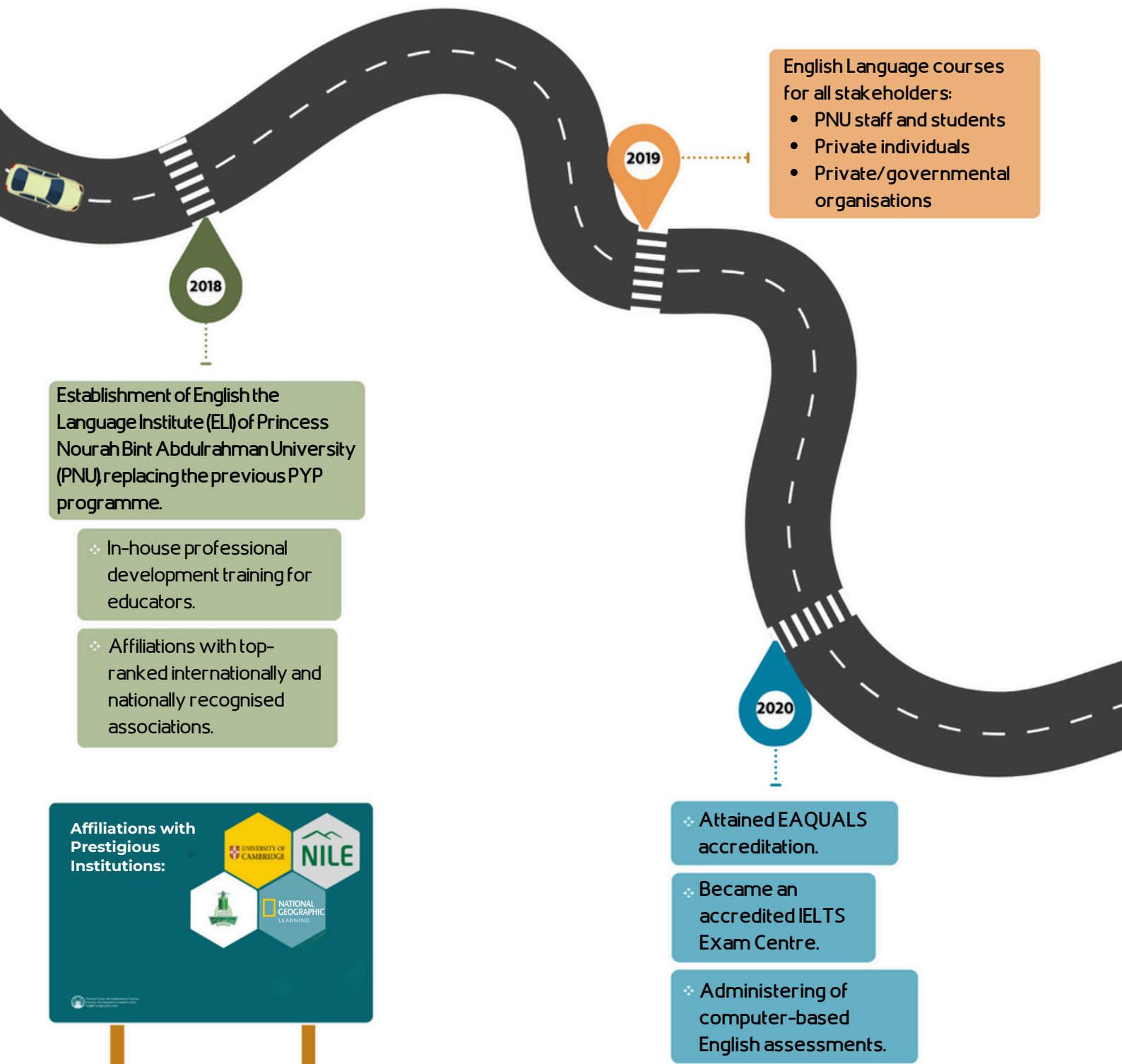
The ELI has attained CEA accreditation in 2023, demonstrating its prowess in English language education. CEA endorses intensive English programmes and institutions both in the U.S. and worldwide.





Milestones

In March 2023, the ELI proudly celebrated its momentous 5th-year anniversary. This significant milestone represents our steadfast commitment to excellence and highlights the tremendous progress we have achieved in providing exceptional English language education.



2018

Establishment of English the Language Institute (ELI) of Princess Nourah Bint Abdulrahman University (PNU), replacing the previous PYP programme.

- ❖ In-house professional development training for educators.
- ❖ Affiliations with top-ranked internationally and nationally recognised associations.

2019

English Language courses for all stakeholders:

- PNU staff and students
- Private individuals
- Private/governmental organisations

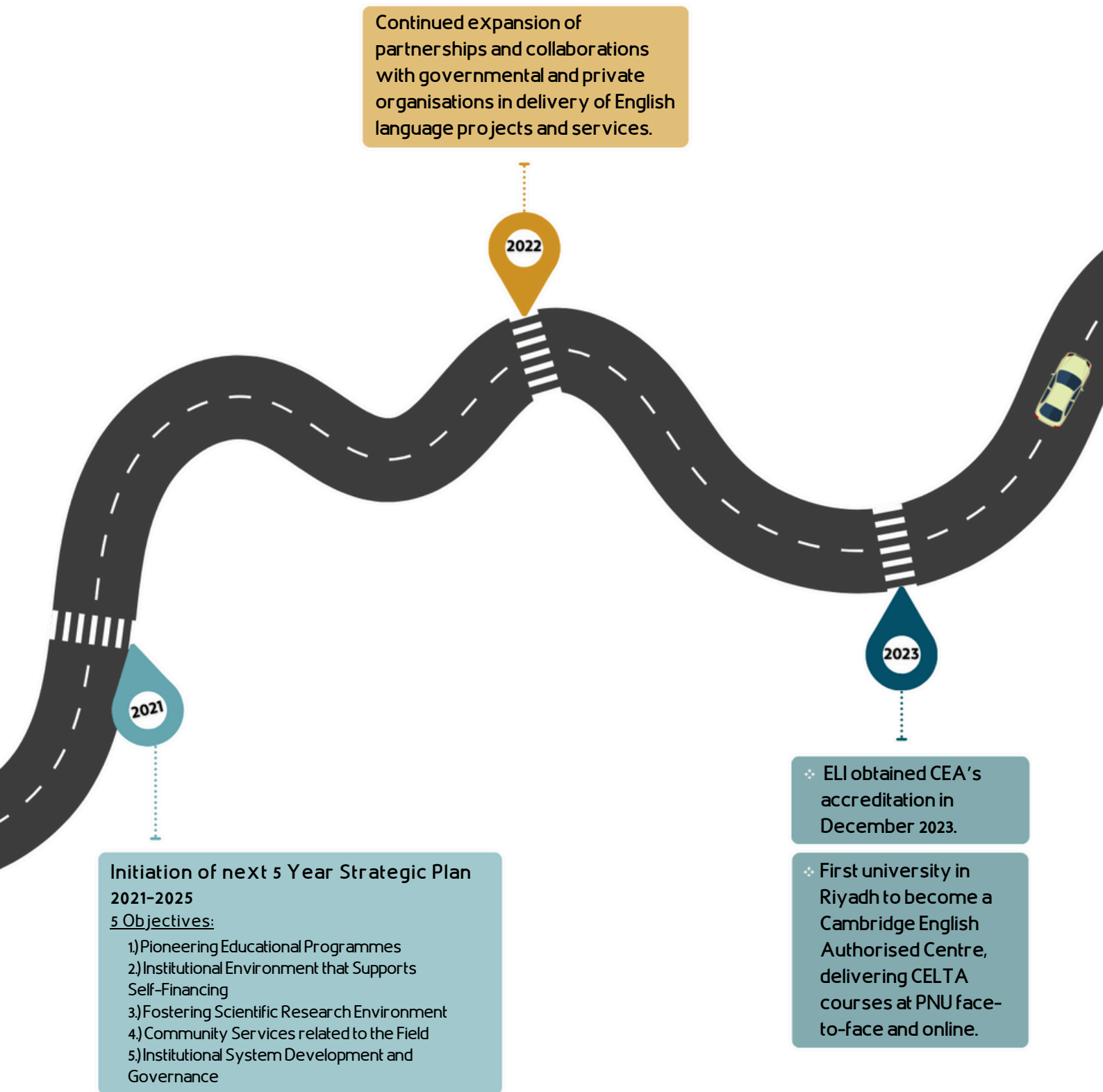
2020

- ❖ Attained EAQUALS accreditation.
- ❖ Became an accredited IELTS Exam Centre.
- ❖ Administering of computer-based English assessments.

Affiliations with Prestigious Institutions:



With five years of empowering students and fostering linguistic proficiency, the ELI continues to elevate the language learning experience, shaping the future of our learners with unwavering dedication and passion.





ELI Partnerships & Collaborations



As we continue to strive for excellence, the ELI actively seeks to cultivate new partnerships within Saudi Arabia and internationally. Our commitment to fostering meaningful collaborations drives us to expand our influence and provide outstanding language education both at home and on the global stage.





Our Projects

ELI's Projects

The ELI proudly engages with a diverse clientele, encompassing governmental, private, national, and international organisations. Through our extensive partnerships, we have successfully executed numerous educational and professional development projects, enabling our clients to achieve their language proficiency goals.

The ELI provides excellent flexibility in tailoring English courses and designing curricula to align with your organisation's language goals, as well as flexible course delivery options and locations.



Some of our important projects



“Our real wealth lies in the **ambition** of our people and the **potential** of our younger generation. They are our **nation's pride** and the **architects of the future.**”

Crown Prince Muhammed bin Salman bin Abdulaziz AlSaud





The ELI delivers year-round English Language Skills courses. Flexible course customisation and curriculum design are also available upon your request. Courses are taught by our exceptionally skilled and passionate teachers. The ELI proudly consists of over 220 highly qualified and experienced English teachers from all over the world, most of whom hold Masters and PhD degrees.





(cont'd)

Dynamic Learning Environment



Teaching Mode:

Face-to-face

(Online option available)



Flexible Teaching Locations:

Your Choice - On PNU Campus or at your organisation's office

Course Duration



From 4 weeks

(Excluding Intensive English and English for Young Learners)

The duration may vary based on customised courses and newly designed curriculum.

Certificate Specifications



Certificate from the English Language Institute (Accredited Curriculum).

Enrolment Process

1

Initial Consultation:

To establish a clear understanding of your organisation's needs and goals.

2

Course Recommendation:

Our ELI Professional Development team will recommend the most appropriate course and duration, offering customisation when needed.

3

Curriculum Designing:*

Where new curriculum designing is requested, we will work closely with you during all steps of the Curriculum Development Process to ensure the highest quality course is created to meet your organisation's English language goals.

4

Placement Tests:

We will administer placement tests to determine the appropriate course level for your employees.

5

Confirmation of Course Details:

We will finalise the course delivery mode, location, and schedule to accommodate your preferences. Once confirmed, the course delivery begins.

6

Certification and Feedback:

Upon course completion, learners will receive a certificate of achievement and comprehensive feedback, recognising progress and accomplishments.

*(Available upon request)

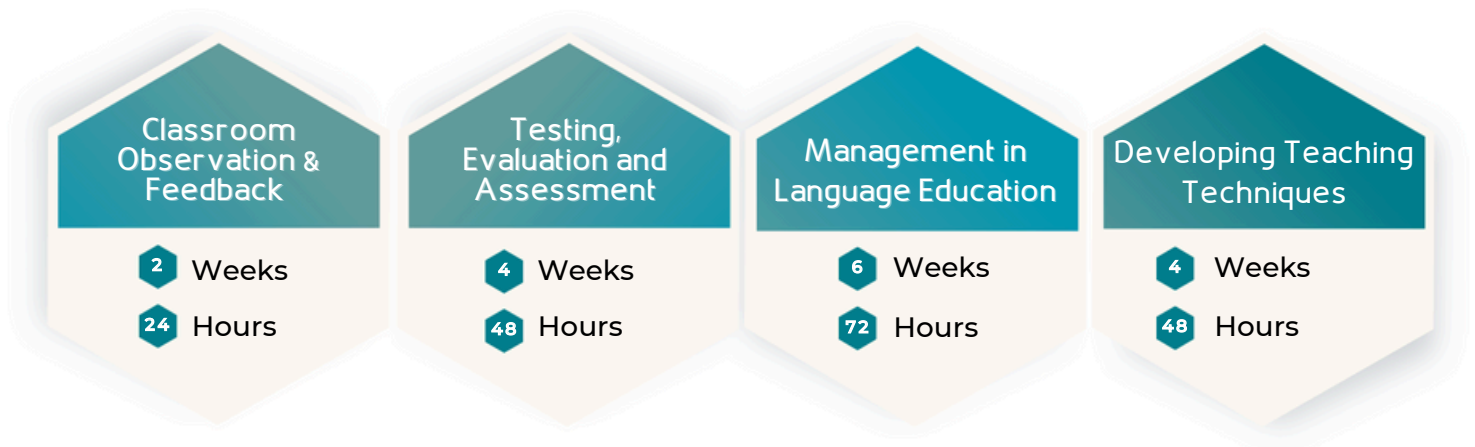




For Teachers

Improving teaching through continuous professional development is crucial for delivering high-quality education to students. The ELI prioritises professional development, offering year-round Teacher Development courses and workshops for our instructors. This commitment has notably elevated the quality of course delivery, leading to enhanced student satisfaction and higher academic performance.

The ELI offers specialised Teacher Development courses for external educators, delivered by our certified Teacher Trainers. Customised Teacher Development courses are also available upon request.





For Teachers



Teaching Mode:

Face-to-face

(Online option available)



Flexible Teaching Locations:

**Your Choice - On PNU Campus
or at your organisation's office**

Course Duration



2-6 weeks

The duration may vary based on customised courses and newly designed curriculum.

Certificate Specifications



Certificate from the English Language Institute (Accredited Curriculum).

Enrolment Process

1

Initial Consultation:

To establish a clear understanding of your organisation's needs and goals in the area of teacher development.

2

Course Recommendation:

Our ELI Professional Development team will recommend the most appropriate course and duration, offering customisation when needed.

3

Curriculum Designing:*

Where new curriculum designing is requested, we will work closely with you during all steps of the Curriculum Development Process to ensure the highest quality course is created to meet your organisation's teacher development goals.

4

Confirmation of Course Details:

We will finalise the course delivery mode, location, and schedule to accommodate your preferences. Once confirmed, the course delivery begins.

5

Certification and Feedback:

Upon course completion, learners will receive a certificate of achievement and comprehensive feedback, recognising progress and accomplishments.

*(Available upon request)





What is CELTA?

CELTA: Certificate in Teaching English to Speakers of Other Languages

- ✓ CELTA is a structured and practical introduction to teaching English as a foreign language (TEFL), awarded by Cambridge English Language Assessment, part of the world-renowned University of Cambridge. The ELL offers this course to individuals as well as large groups of 6-12 candidates.

Enrolment Process

- 1 Registration
- 2 Application form and language awareness task
- 3 Interview
- 4 Payment of course fees

More Information



Explore More About Our CELTA Courses by Scanning the QR Code



Why is it important?



Global Teaching Qualification

CELTA equips you with the necessary qualification, knowledge, practical experience, and confidence to kick-start your teaching career anywhere in the world.



Essential Skills for Teaching Adults

CELTA provides you with the essential required to effectively teach English to adult learners.



International Recognition

This internationally recognised certification is mandatory for those seeking to work with esteemed language teaching institutions such as the English Language Institute at Princess Nourah University.

Fees & Payment:*

Average price as follows:



CELTA Full-time (Online)

- Course fees 2024: 8000 SAR (including Cambridge registration fee)
- VAT (@15%): 1200 SAR
- Total: 9200 SAR



CELTA Full-time (Face-to-face)

- Course fees 2024: 9500 SAR (including Cambridge registration fee)
- VAT (@15%): 1425 SAR
- Total: 10925 SAR

*Note: Prices may vary

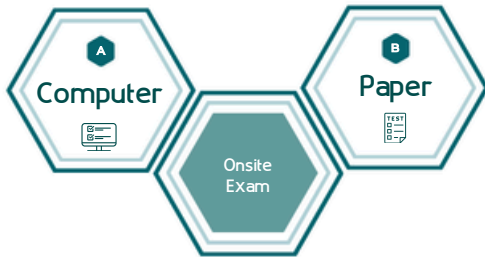


What is IELTS?

IELTS: IELTS: International English Language Testing System

- ✓ IELTS is the world's most popular and widely recognised high-stakes English language proficiency test for study, work and migration. IELTS results are accepted by educational institutions, employers, professional associations and governments, in 140 countries around the world.

How are the exams conducted?



How to Register:

Simply choose 'Princess Nourah University' as your test centre when registering for IELTS.

Why is it important?



Global Recognition

The IELTS exam is recognised worldwide and the leading proficiency exam. It is beneficial for:

- **Work purposes** - IELTS Academic
- **Studying** - IELTS General Training
- **Migration** - IELTS for UK visas



Flexible Exam Options

In collaboration with the British Council and IDP Centre, the ELI offers both computer-based and paper-based exams. The dates to register are available throughout the year.

Services provided

- 1 Online registration
- 2 IELTS Preparation Course (extra fees)
- 3 Online training (free)
- 4 Fully equipped labs

IELTS Examination Fees*

Average price as follow:

IELTS General & Academic (computer & paper based):

IELTS UKVI (computer & paper based):
1480 SAR

*Note: Prices may vary

More Information



Scan for More Information on Our IELTS Centre

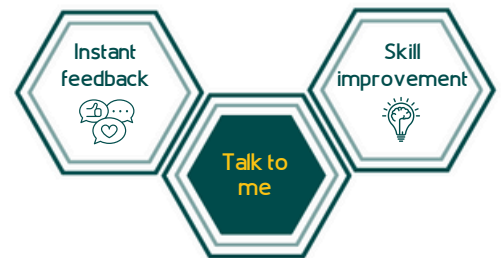




The ELI's Speaking Centre offers a pioneering service where candidates can practice their speaking skills in an authentic and natural environment to improve their fluency and accuracy.

Our Services

1 Talk to me: The candidate will have an authentic and organic dialogue with a teacher about their chosen topics for the desired amount of time. Instant feedback is provided to improve pronunciation, accuracy and fluency.



2 Talk to a friend: The candidate will have the opportunity to speak to another candidate (a peer) who is at a similar proficiency level whilst the teacher acts as an interlocker. The teacher then provides delayed error correction to promote the flow of a natural conversation.



30 minute sessions
One session
Five sessions (65 SAR per session)
Ten sessions (60 SAR per session)
Fifteen sessions (55 SAR per session)
Twenty sessions (50 SAR per session)

Price*
70 SAR
325 SAR
600 SAR
825 SAR
1000 SAR

60 minute sessions
One session
Five sessions (120 SAR per session)
Ten sessions (100 SAR per session)
Fifteen sessions (96 SAR per session)
Twenty sessions (90 SAR per session)

Price*
130 SAR
600 SAR
1000 SAR
1450 SAR
1800 SAR

* All prices include VAT

More Information



Scan for More Details on Our Speaking Centre





The ELI's Writing Centre offers writing workshops, professional translating, transcribing, and editing services to both individuals and organisations.

Translation and transcribing services are available for all formats: videos, audio files, documents, web page, advertisements etc.

Service	Details	Price*
Translation (Standard)	10,000 words	2,670 SAR
Translation (Special/ Express)	10,000 words	3000 – 3500 SAR
Translation (Standard)	5,000 words	1,400 SAR
Translation (Special Express)	5,000 words	1500 – 1850 SAR
Transcribing (Standard 1-3 minutes)	1-2 speakers 3+ speakers	150 SAR 200 SAR
Transcribing (Standard up to 25 minutes)	1-2 speakers 3+ speakers	600 SAR 650 SAR
Transcribing (Standard up to 45 minutes)	1-2 speakers 3+ speakers	1,200 SAR 1,500 SAR
Transcribing (Special/ Express 1-3 minutes)	1-2 speakers 3+ speakers	250 SAR 300 SAR
Transcribing (Special/ Express 25 minutes)	1-2 speakers 3+ speakers	700 SAR 750 SAR
Transcribing (Special/ Express 45 minutes)	1-2 speakers 3+ speakers	1,500 SAR 1,800 SAR
Proofreading (Basic – Standard proofreading with spelling, punctuation, & grammar checks)	1000 words + free 20 minute consultation	100 SAR
Editing and Proof Reading (Sentence-level edits for clarity, logical flow, word choices, and readability + proofreading)	1000 words + free 30 minute consultation	170 SAR
Heavy Editing/ Rewriting (Rewriting and/or reorganisation)	1000 words + free 30 minute consultation	250 SAR
Workshop Service (Customised workshops to meet clients' needs, delivered at client's site or PNU campus)*	Workshops suitable for clients' needs.	Starting from 100 SAR per person

*All prices include VAT

More Information



Scan for More Details on Our Writing Centre



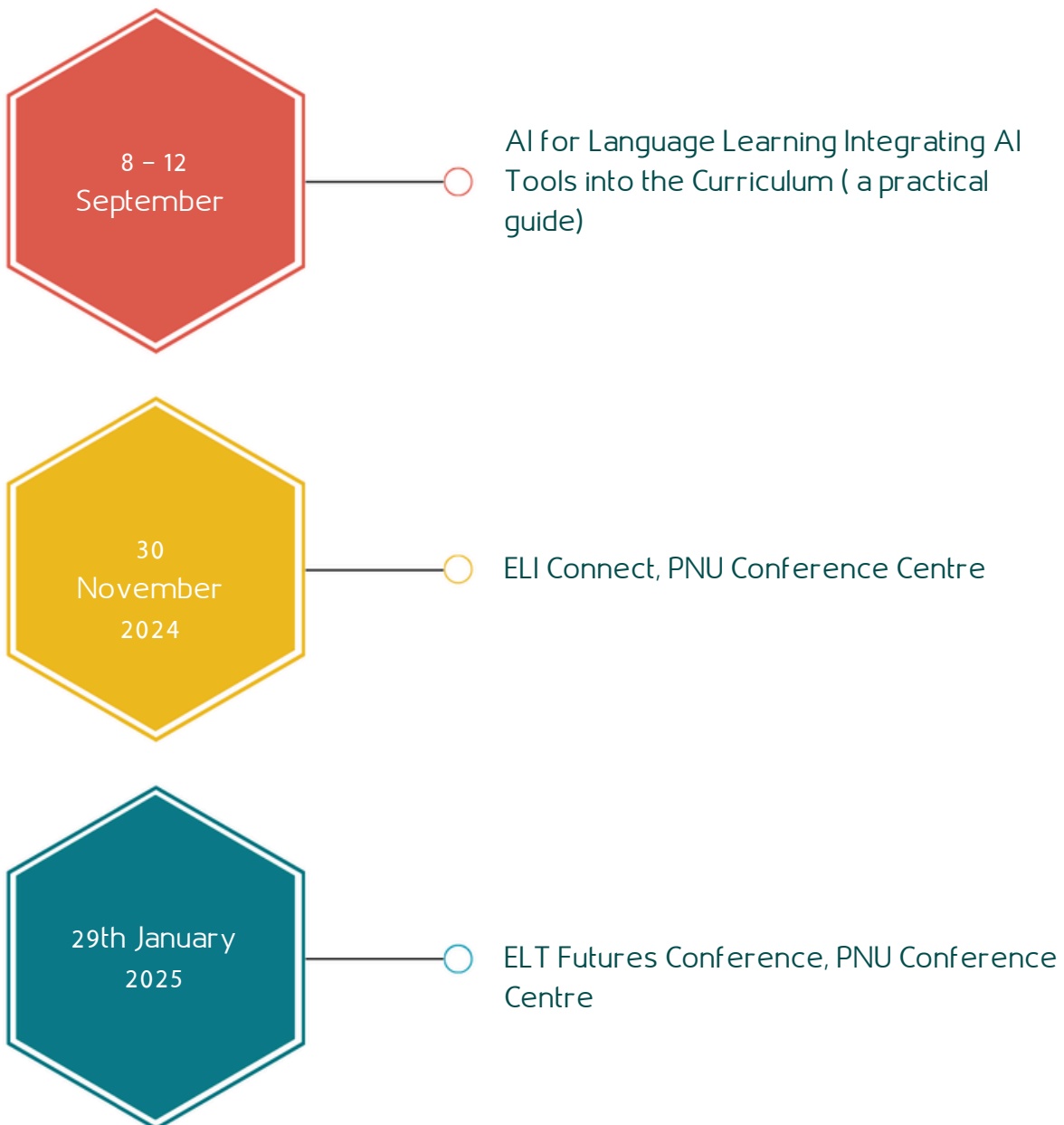
Duration of workshop	Number of students	Price*
2 hours	5	500 SAR
2 hours	10	900 SAR
2 hours	15	1300 SAR
2 hours	20	1700 SAR

*All prices include VAT



ELI Events

These are some of our ELI events for this year and the upcoming year:





CONTACT US



01182235661



0118221888



Eli-pcrd@pnu.edu.sa



Our Location



