



جامعة الأميرة نورة بنت عبدالرحمن
Princess Nourah bint Abdulrahman University



LINUX Download and Install links



Index:

Learning Objectives:	3
Installing Ubuntu	4
Download Ubuntu.....	4
Installing Ubuntu (Steps).....	4
Configuring Desktop	11
Running a live session	13
Reference	14



Learning Objectives:

By the End of this lesson the student is expected to be able to:

- Show different steps that must be established to install and configure Ubuntu.



Installing Ubuntu

Download Ubuntu

- To download Ubuntu, use this link and choose the appropriate version:
 - <https://ubuntu.com/#download>
 - installing Ubuntu (Video Tutorial):
 - A. Dual Boot: Installing Ubuntu alongside Windows
<https://www.youtube.com/watch?v=u5QyjHIYwTQ>
 - B. Only Ubuntu as an OS in your computer
<https://www.youtube.com/watch?v=W-RFY4LQ6oE>

Installing Ubuntu (Steps)

1. Create a live USB or disk

- Download and create a live USB or DVD.
<https://ubuntu.com/download/desktop>
- To create a live USB, it is possible to use Universal USB Installer
<https://www.pendrivelinux.com/universal-usb-installer-easy-as-1-2-3/>

2. Boot in to live USB

- Plug the live USB or disk into the computer.
- Restart the computer.
- While booting, press F10 or F12 function key (differs from computer to computer) to go to the boot menu.

- Choose the option to boot from USB of Removable Media.

3. Start the installation

- Once booted, a screen will be exposed to give two options:

1. To try Ubuntu (work without installing Ubuntu)

2. Install Ubuntu

➔ **To install the OS, choose « install Ubuntu »**

- Few screens are straight forward, just press « continue »
(Figure 1)

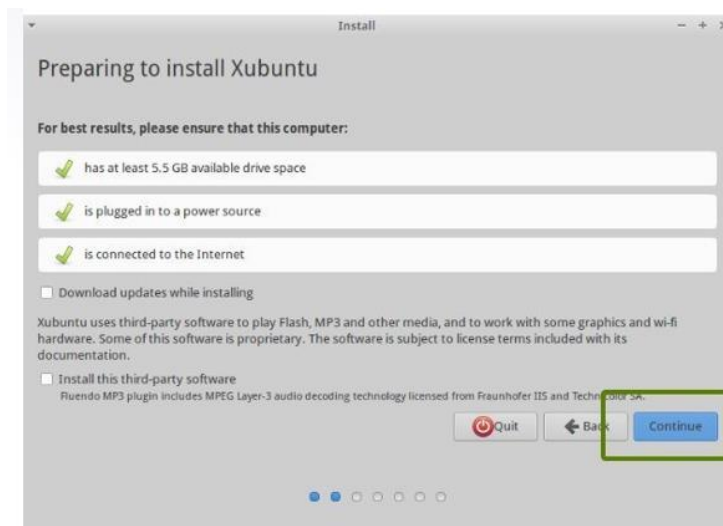


figure 1: preparing for the installation

4. Prepare the partition

- This is the most important part of the whole dual boot installation
: Where to install Ubuntu ?
- Windows is already installed in your computer ➔ you have to
prepare a new partition for ubuntu in the installation type window.

➔ For that choose the option « Something else » (Figure 2)

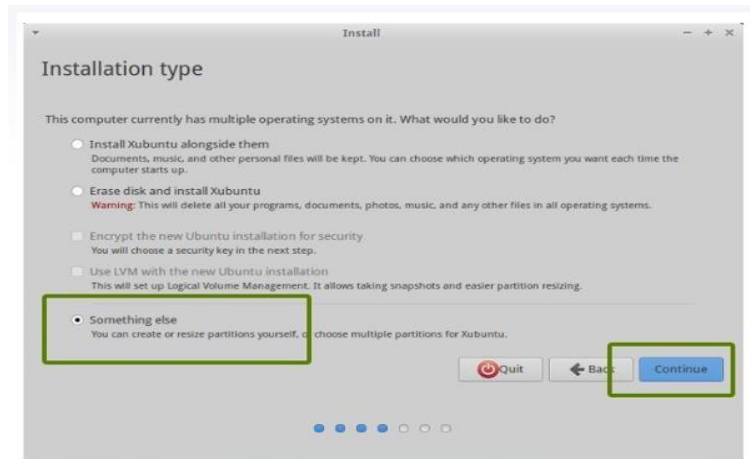


Figure2: preparing the partition.

- The Figure 3 shows That different partitions are existing on the hard disk : 3 NTFS partitions and some ext4 partitions.
- One of the NTFS is for Windows installation ➔ do not touch if you want to keep your windows installation safe
- You need to create some free space (by deleting a partition)
- Click on the desired partition and press – to delete it

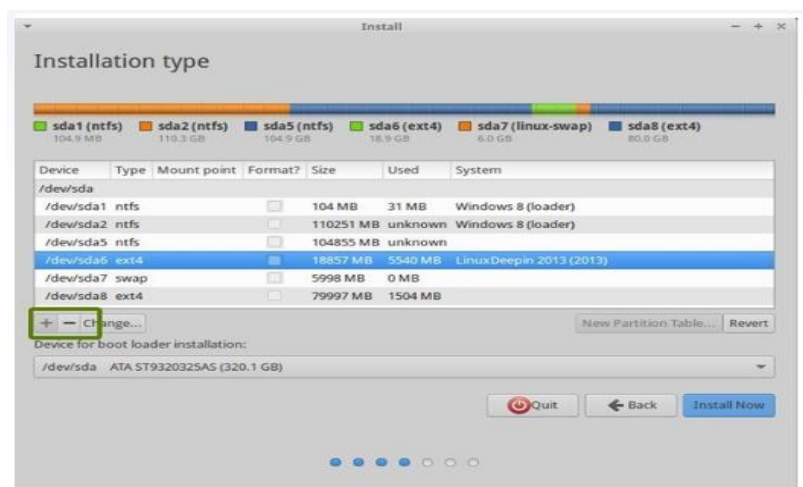


Figure3: preparing a free Partition

5. Create root (/), swap and home

Install Ubuntu in the free space.

- Create a root partition first : choose the free space available and click on + (Figure 4)
- Choose the size of root directory, ext 4 system, mount point (root) (Figure 5)

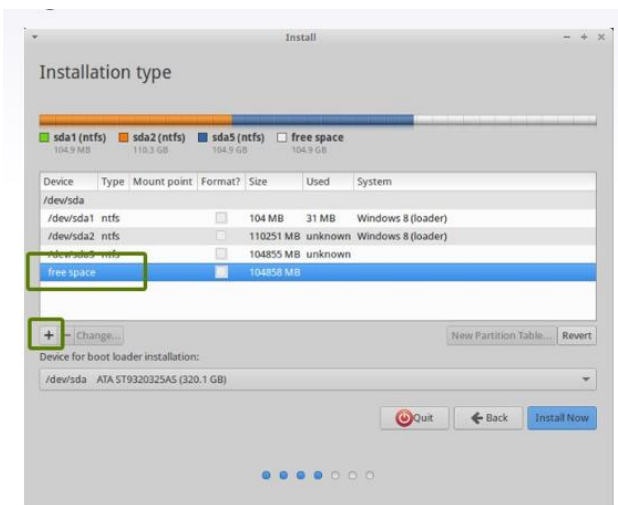


Figure 4: Space for Ubuntu installation

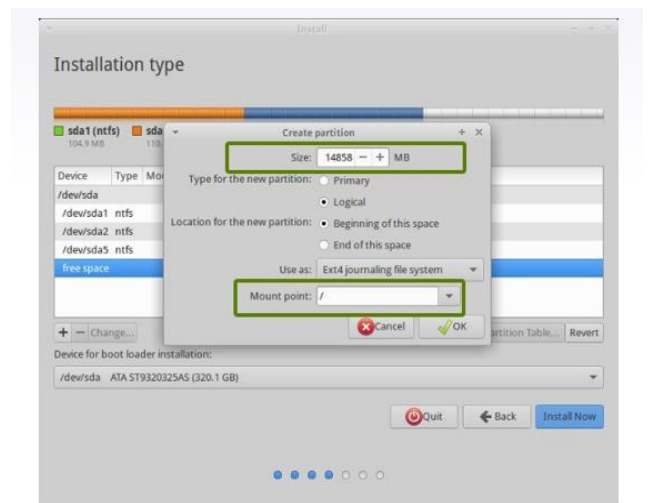


figure 5: Selection of root directory size

6. Create Swap partition

- Create Swap partition.
- Choose the SWAP size (Figure 6).

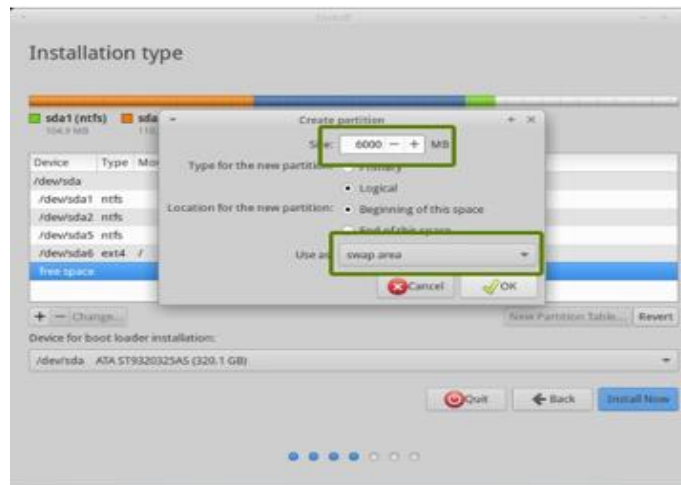


figure 6: Preparing the SWAP partition

7. Create Home

- Try to allocate the maximum size to Home because this is where you 'll be downloading and keeping the files (Figure 7)

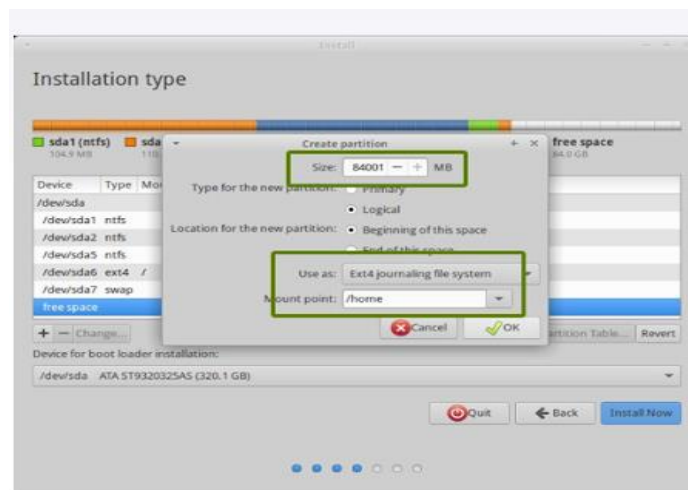


figure 7: creation of Home

- Once you have created Root, Swap, and home partitions, click on Install Now button (Figure 8)

➤ **Beginning of the installation**

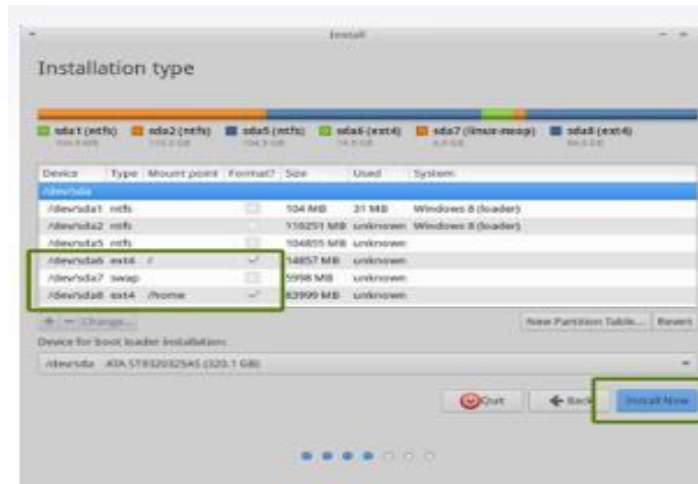


figure 8 :Beginning of the installation

➤ Follow the trivial instructions to select options like keyboard layout, login credentials, etc. (Figure 9 and 10)

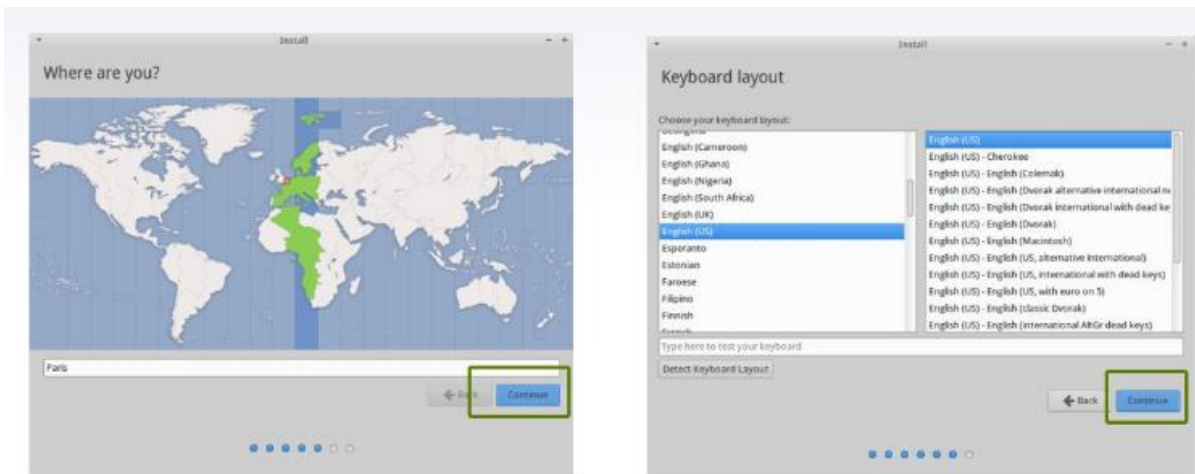


figure 9: trivial instructions

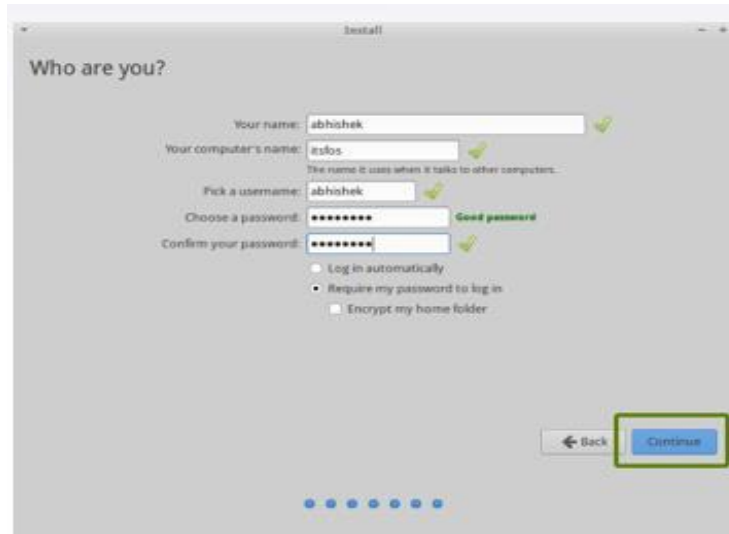


figure 10: User information

➤ Beginning of the installation (Figure 11)



figure 11: Start of Ubuntu installation

- Once the installation is over, a system restart is required

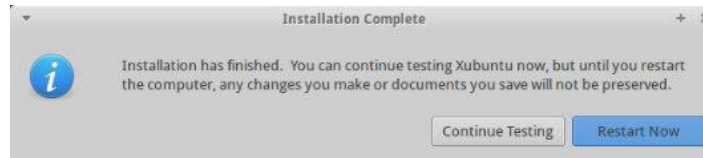


figure 12: the message of Installation Complete

Configuring Desktop

- Get familiar with GNOME in Ubuntu

1. Activities :

- Gives a quick glance at various applications running in your system .
- Helps to search for applications, files and so on.
- You can access activities either by pressing the super key of clicking on the activities option that is always displayed in the top corner (Figure 13).

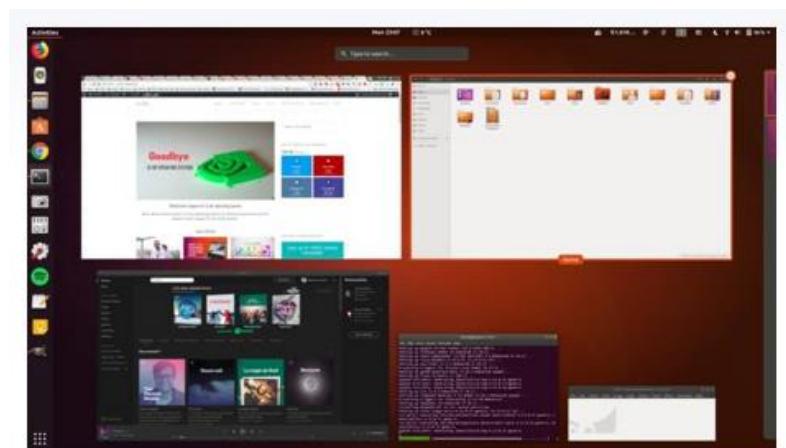


figure 13: Activities

2. Application Display :

- You can see all the applications installed on your system using the show applications option at the bottom of the launcher (Figure 14).



figure 14: Applications

3. Add applications to the launcher :

- It is easy to search for an application to run it, but it is easier to run it if it is available in the launcher itself.
- To add a running application to the launcher, simply right click on it and use the option « add to favorite » (Figure 15)

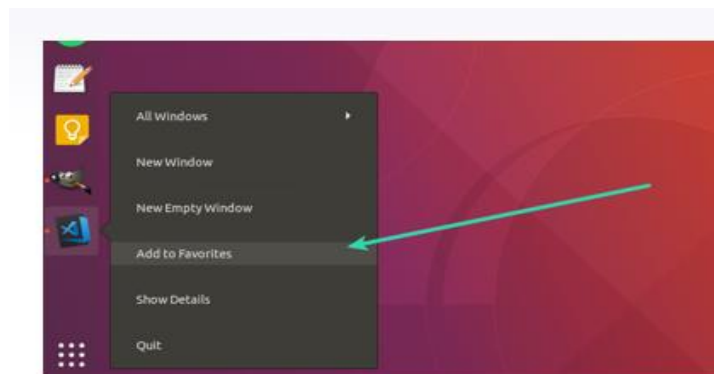


figure 15: Add Application to favorites.



Running a live session

- Boot from a dvd or flash drive.
- Restart your computer.
- Choose Try Ubuntu Without Installing (Figure 16)

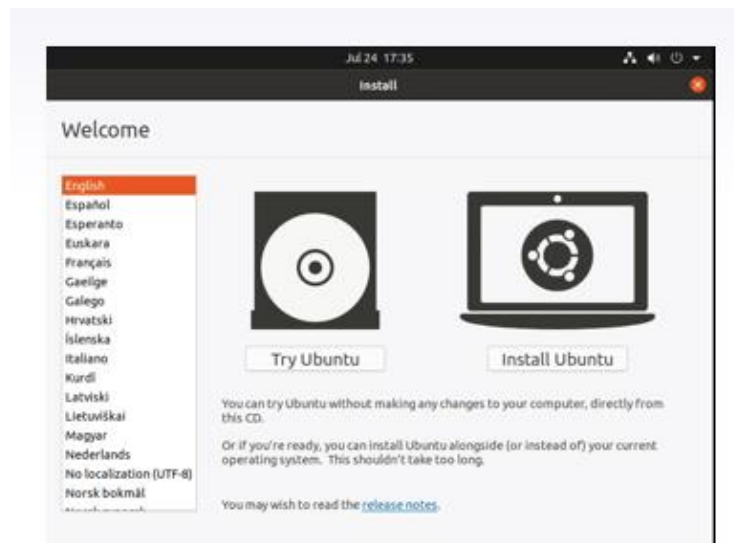


Figure16: Ubuntu boot



Reference

- Stallings, W. (2011). *Operating Systems: Internals and Design Principles* (7th Edition) (7th ed.). Pearson Learning Solutions .
- Stallings, W. (2017). *Operating Systems: Internals and Design Principles* (9th Edition) (9th ed.). Pearson Learning Solutions.