

Kingdom of Saudi Arabia
Ministry of Education
Princess Nourah bint
Abdulrahman University
(048)



المملكة العربية السعودية
وزارة التعليم
جامعة الأميرة
نورة بنت عبدالرحمن
(٠٤٨)

College of Health and Rehabilitation Sciences
Department of Health Communication Sciences
Audiology and Balance Program
Program Handbook



Table of Contents

Contents

TABLE OF CONTENTS	2
PNU VISION	4
PNU MISSION	4
PNU VALUES	4
OVERVIEW OF THE COLLEGE OF HEALTH AND REHABILITATION SCIENCES	5
COLLEGE VISION	7
COLLEGE MISSION	7
COLLEGE GOALS	7
COLLEGE ORGANIZATIONAL STRUCTURE	8
OVERVIEW OF THE AUDIOLOGY AND BALANCE PROGRAM	9
PROGRAM MISSION	9
PROGRAM GOALS	9
PROGRAM LEARNING OUTCOMES	9
PROGRAM IDENTIFICATION AND CURRICULUM INFORMATION	10
MAIN LOCATION	10
STUDY DURATION	10
JOB OPPORTUNITIES	10
STUDY LANGUAGE	10
SCIENTIFIC DEGREE	10
ACCEPTANCE CRITERIA	11
GRADUATE ATTRIBUTES	14
THE ROLE OF THE AUDIOLOGIST	15
STUDY PLAN	16
INTERNSHIP	20
ACADEMIC ADVISING	22
THE PSYCHOLOGICAL AND SOCIAL COUNSELING UNIT	24

Kingdom of Saudi Arabia
Ministry of Education
Princess Nourah bint
Abdullah University



المملكة العربية السعودية
وزارة التعليم
جامعة الأميرة
نور بنت عبد الرحمن

GRADING SYSTEM	25
(048) LEARNING ENVIRONMENT SUPPORT	26 (٠٤٨)
PROGRAM MEMBERS	29
REFERENCES	30





PNU Vision

Princess Nourah bint Abdulrahman University aspires to be a beacon of knowledge and values for women.

PNU Mission

Princess Nourah bint Abdulrahman University is a comprehensive university for women, distinguished by its leadership in education and scientific research. It contributes to establishing a knowledge-based economy with societal and global partnerships.

PNU Values

- Growth
- Continuous learning, innovation
- Awareness
- Belonging, sympathy
- Pioneering
- Initiation, excellence
- Agility
- Flexibility, responsiveness



Overview of the College of Health and Rehabilitation Sciences

College of Health and Rehabilitation Sciences (CHRS) came to be one of the basic scientific structures at Princess Noura bint Abdelrahman University (PNU) to prepare, qualify, and graduating scientifically and professionally qualified cadres in the field of health and rehabilitation sciences. It also aims to meet the needs of society in this field and to confirm its role in the development of the community in integration with other sciences and disciplines.

It was established in 1429, and Higher Education Council Resolution No. 7-17 / A was issued on 8/17/1433 AH, approving the restructuring of the Faculty of Physiotherapy and changing its name to the College of Health and Rehabilitation Sciences. The college has many departments:

CHRS departments and programs

1. Department of Rehabilitation Sciences
2. Department of Radiological Sciences
3. Department of Health Communication Sciences
4. Department of Health Sciences

In addition, each department has several programs with 13 programs in total.

Department of Health Sciences

1. Epidemiology Program
2. Health Education Program
3. Clinical Nutrition Program
4. Clinical Psychology Program



Department of Rehabilitation Sciences

1. Doctor of Physical Therapy Program
2. Occupational Therapy Program
3. Respiratory care Program

Department of Radiological Sciences

1. Radiation Program
2. Diagnostic Imaging Program
3. Ultrasound Program
4. Nuclear Medicine Technology Program

Department of Health Communication Sciences

1. Audiology and Balance Program
2. Speech and Swallowing Disorders program



College Vision

Serve as a guiding light in the process of knowledge construction that actively contributes to the development of sustainable health development.

College Mission

Prepare competent cadres, qualified on the levels of knowledge, profession, and research in accordance with the latest standards for the development of health care and community service.

College Goals

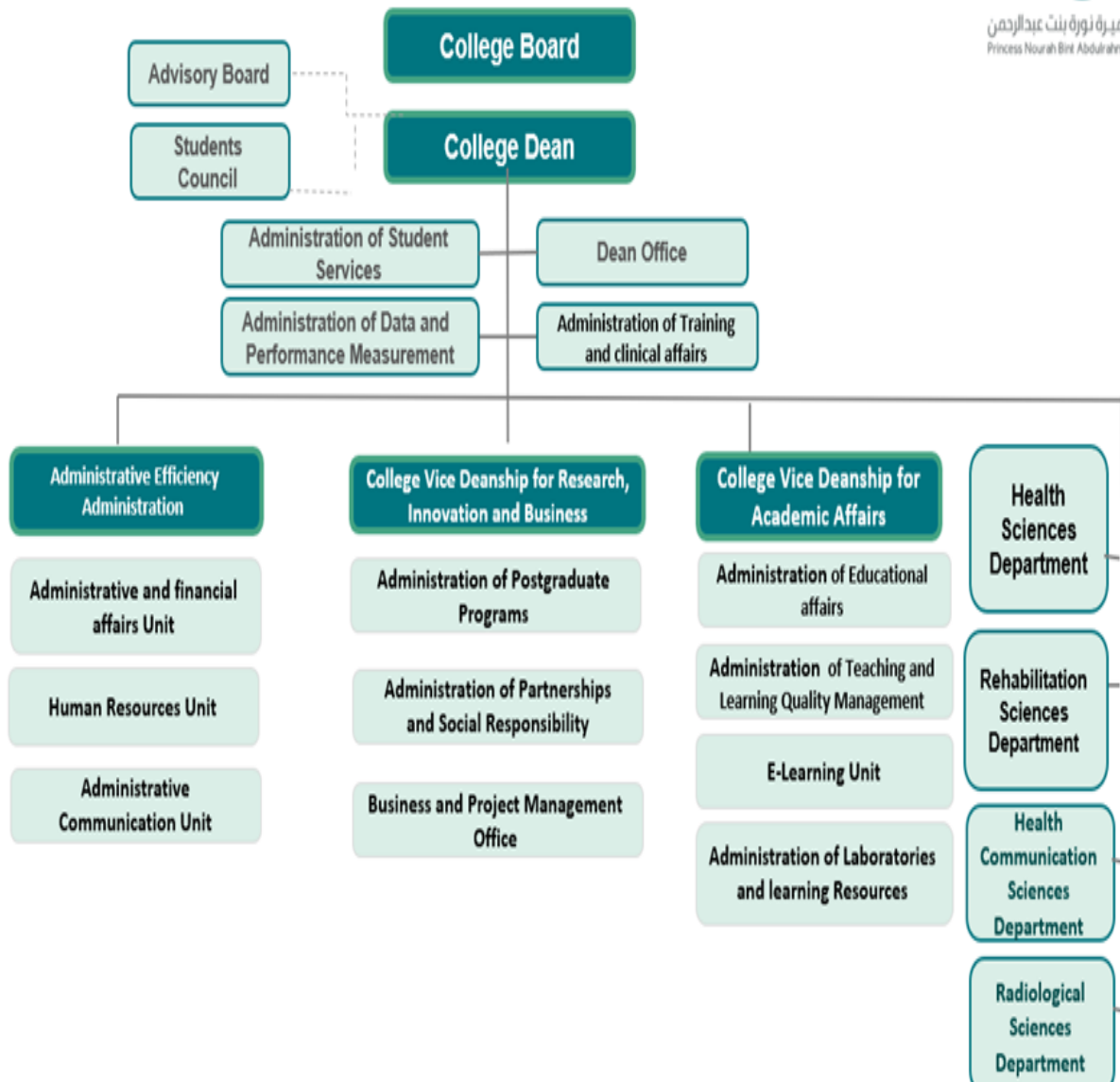
1. Qualify specialized cadres in the fields of health and rehabilitation sciences capable of professional practice according to the latest standards.
2. Promote education, continuous learning and innovation according to modern technology.
3. Produce research in the field of healthcare that contributes to the application of evidence- based practice.
4. Contribute effectively to improving community health and quality of life in collaboration with relevant sectors.



College Organizational Structure



جامعة الأميرة نورة بنت عبدالرحمن
 Princess Nourah Bint Abdulrahman University





Overview of the Audiology and Balance Program

Program Mission

Preparing specialized health cadres in Audiology and Balance by providing knowledge, clinical and research skills to contribute to the community service in the field of Audiology and Balance.

Program Goals

1. Prepare qualified audiologists that are capable of integrating knowledge and critical thinking skills into their practice.
2. Prepare audiologists with clinical competency through intensive clinical training.
3. Conduct research in the field of audiology and balance.
4. Contribute to community services in the field of audiology and balance.

Program Learning Outcomes

Program learning Outcomes

Knowledge and understanding

- K1** Identify basic concepts and theories in general sciences.
- K2** Recognize basic theoretical and clinical sciences of the scope of audiology and balance.

Skills

- S1** Perform full test battery related to the diagnosis and rehabilitation of audio- vestibular dysfunction.
- S2** Apply problem-solving skills in the diagnosis and rehabilitation of different audio-vestibular dysfunctions.
- S3** Conduct research in the field of audiology and balance using modern technology

Values

- V1** Demonstrate ethics of audiology and balance profession.



Program Identification and Curriculum Information

Main Location

Princess Nourah University, A10, College of Health and Rehabilitation Sciences, building 240, 2nd floor.

Study Duration

Eight semesters over a period of four years in addition to the internship year (134 Credits hours) +1 year of full-time clinical internship (40 hours per week). Graduation certificate is awarded after completing the internship year.

Job Opportunities

Graduates can pursue their career at the following settings:

- All government and private hospitals.
- Private clinics.
- Health centers
- University Academic education.
- Rehabilitation centers
- Research centers.

Study Language

The program is primarily taught in English. However, Arabic is required for university-wide courses.

Scientific Degree

Bachelor of Science degree in Audiology and Balance.



Acceptance Criteria

I. Admission conditions in PNU:

New students' admission is conditioned by:

1. Saudi nationality.
2. High school or equivalent is from kingdom of Saudi Arabia or abroad.
3. Not exceeding 5 years of high school graduation including the year of graduation.
4. obtaining general aptitude test and achievement test from the national center for assessment either graduated from Saudi Arabia or abroad and studied Saudi curriculum or not.
5. Passing any required tests or interviews.
6. Medically fit.
7. Matching admission conditions or any other conditions required by university council and announced on admission time.
8. Appropriate psychologically and physically for health specialties, and in case of discovery otherwise the university has the right to transfer its admission to other specialties within the university.
9. Not being registered, accepted, has already obtained a bachelor's degree or has been dismissed for disciplinary reasons from a public university or any other university. Otherwise, the university has the right to cancel the admission.
10. Not having a previous record at Princess Noura bint Abdulrahman University or has already obtained a diploma from the Community.



a. Admission criteria at Princess Noura bint Abdulrahman University:

Admission to Princess Noura bint Abdulrahman University is based on a composite comprising high school score (30%), GAT score (30%) and achievement score (40%).

b. Health and scientific faculties:

30% GPA + 30% GAT test + 40% for achievement test.

c. Documents required for admission:

For the Saudi student: There are no documents required as confirmation of acceptance will be electronic, and it is enough to hand over the documents.

For a non-Saudi student from a Saudi mother, you must come to the university admission department according to the period specified for it, with the following documents:

- The origin of the residence and passport.
- The origin of the birth certificate and two copies of it.
- National ID card for the student's mother and 2 copies.

II. Admission procedures at Princess Noura bint Abdulrahman University:

1. Access the unified e-admission portal for female students for public universities and technical college in Riyadh to check the schedule and abide by the announced admission procedures and dates.
2. Pass any test or interview required by the university.
3. The announcement of candidates for admission through the unified electronic admission portal for public universities and technical college in Riyadh through the trade-off between the applicants according to the announced admission criteria and the order of wishes, the availability of seats, conditions of admission to colleges and the capacity of the university.



4. Confirm admission through the unified electronic admission portal for female students and print the admission notice during the announced time period.
5. Entering the data of students who confirmed their admission through the unified electronic admission portal in the university system and granting them university numbers.
6. Sending text messages to the accepted students' phones including university number, password and access to the academic system and university mail.
7. The student must check the website to find out the dates of English test and issuing the university card and ATM card.
8. Follow-up of the student to the instructions and alerts through her account in the portal of the unified electronic admission and the website of the university that she was nominated for admission.

III. **Acceptance in the Audiology and Balance program requires:**

- Successfully passing all the foundation year courses.
- The student should have a cumulative GPA of at least (3).
- Availability of seats.

For more details, please refer to [CHRS – Students' Guidance and Counselling Services.](#) and [CHRS – Student Admission and Registration Manual.](#)



Graduate Attributes

Graduate Attributes

Our graduates should possess knowledge, skills, and values to enable them to cope with employment opportunities in the Audiology and Balance field and help them to contribute positively to the diversity they will meet in their local, regional, and global communities.

Attribute 1: Awareness and knowledge

Knowledgeable of the basic concepts, theories and clinical experience associated with the field of audiology and balance.

Attribute 2: Analysis and creativity

Able to think critically and be creative in solving problems related to different challenges of audiology and balance.

Attribute 3: Leading businesses and Informational competency

Can acquire the skills in applying research using modern technology in the field of audiology and balance.

Attribute 4: Values professional behavior through evidence-based decision making

Capable of complying with “Standards of Professional Performance” and the “Code of Ethics for the Profession of audiologists”.

Attribute 5: Community service

Participate in community services related to audiology and balance.



The Role of the Audiologist

The role description of audiologists as provided by the Saudi Commission for Health Specialties:

Specialization Summary:

Specialty concerned with hearing loss, diagnosing hearing and balance disorders, providing rehabilitation therapy in addition to adjusting and programming hearing aid and implanted hearing aid.

Core Competencies:

Theoretical, practical, and procedural knowledge of the following:

1. Hearing evaluation and diagnosing.
2. Hearing aids.
3. Cochlear and implanted hearing devices.
4. Physics of Sound.
5. Evaluating hearing physiology.
6. Hearing and linguistic evolution.
7. Evaluating and diagnosing balance disorders.
8. Treating and rehabilitating hearing and balance disorders



Study Plan

1. Curriculum Structure

Program Structure	Required/ Elective	No. of courses	Credit Hours	Percentage
Institution Requirements	Required	2	4	3%
	Elective	4	8	6%
Health track- Preparatory year Requirements	Required	10	28	21%
	Elective	0	0	0%
College of Health and rehabilitation Sciences Requirements	Required	5	15	11%
	Elective	0	0	0%
Department Requirements	Required	3	8	6%
	Elective	0	0	0%
Program Requirements	Required	20	65	49%
	Elective	0	0	0%
Capstone Course/Project	Required	2	6	4%
Field Training/ Internship	Required	NA	1 year of full time, 40h/week	N/A
Total		46	134+ 1 year internship	100%



2. Program Courses

Level	Course Code	Course Title	Required or Elective	Pre-Requisite Courses	Credit Hours	Type of requirements (Institution, College, or Program)
Level 1	ENG 131	Academic English for Health Specialties (1)	Required	-	3+0+0=3	Health Track-preparatory Year
	MME 110	Health Profession Skills	Required	-	3+0+0=3	Health Track-preparatory Year
	MATH 162	Statistics for Health Specialties	Required	-	2+1+0=3	Health Track-preparatory Year
	CHEM 104	General Chemistry for Health Specialties	Required	-	2+1+0=3	Health Track-preparatory Year
	HRS 118	Medical Terminology	Required	-	2+0+0=2	Health Track-preparatory Year
		University Mandatory (1)		Required	-	2+0+0=2
Level 2	ENG 132	Academic English for Health Specialties (2)	Required	ENG 131	3+0+0=3	Health Track-preparatory Year
	PHYS 105	General Physics for Health Specialties	Required	-	2+1+0=3	Health Track-preparatory Year
	BIO 105	Human Biology for Health Specialties	Required	-	2+1+0=3	Health Track-preparatory Year
	BDS 100	Introduction to Health Professions and Ethics	Required	-	2+0+0=2	Health Track-preparatory Year
	CPP 100	Fundamentals of Scientific Research	Required	-	2+1+0=3	Health Track-preparatory Year
		University Mandatory (2)		Required	-	2+0+0=2
	University Elective (1)		Elective	-	2+0+0=2	Institution
Level 3	HRS 111	Human Anatomy and Physiology	Required	-	3+1+0=4	College
	HCS 201	Introduction to Hearing and Speech Sciences	Required	-	2+1+0=3	Department
	HCS 202	Introduction to Psychology	Required	-	3+0+0=3	Department
	HCS 203	Human Growth and Development	Required	-	2+0+0=2	Department
	HRS 114	Emergency Life Support techniques	Required	-	2+1+0=3	College



Level	Course Code	Course Title	Required or Elective	Pre-Requisite Courses	Credit Hours	Type of requirements (Institution, College, or Program)
		University Elective (2)	Elective	-	2+0+0=2	Institution
Level 4	AUD 211	Neurology of hearing and balance	Required	HRS111	2+1+0=3	Program
	AUD 212	Anatomy and Physiology of the Hearing and Balance Mechanisms	Required	HRS 111	2+1+0=3	Program
	AUD 213	Psychoacoustics and Sound Perception	Required	-	2+1+0=3	Program
	AUD 225	Speech and Language Development	Required	-	2+1+0=3	Program
		University Elective (3)	Elective	-	2+0+0=2	Institution
		University Elective (4)	Elective	-	2+0+0=2	Institution
Level 5	AUD 316	Pathophysiology of Hearing Disorder	Required	AUD 212	3+1+0=4	Program
	AUD 327	Psychosocial Aspects of Hearing loss	Required	-	2+0+0=2	Program
	AUD 331	Audiology I	Required	HCS 201 AUD 212	2+1+0=3	Program
	AUD 341	Electrophysiologic Tests	Required	AUD 211 AUD 212	2+1+1=4	Program
	HEP 331	Communication Skills for Health Care Professionals	Required	-	2+1+0=3	College
Level 6	HRS 116	Biostatistics	Required	-	2+1+0=3	College
	AUD 351	Aural Rehabilitation	Required	-	2+1+0=3	Program
	AUD 344	Audiology II	Required	AUD 331	2+1+1=4	Program
	AUD 332	Pediatric Audiology	Required	AUD 331 AUD 341	2+0+1=3	Program
	AUD 342	Pathophysiology of Balance Disorder	Required	AUD 212	2+1+0=3	Program
	HEP 332	Professionalism and Ethics in Health care Practices	Required	HEP 331	2+0+0=2	College
Level 7	HCS 481	Research Project 1	Required	HRS 116	3+1+0=4	Department
	AUD 433	Clinical Audiology (1)	Required	AUD 344	2+0+2=4	Program
	AUD 452	Amplification and Assistive Listening Devices	Required	-	2+1+0=3	Program
	AUD 453	Vestibular assessment and management	Required	AUD 212	2+1+1=4	Program
	AUD 434	Hearing Screening	Required	-	2+0+1=3	Program
Level 8	HCS 482	Research Project 2	Required	HRS 116 HCS 481	0+2+0=2	Department
	AUD 426	Medical Aspects of Communication Disorders	Required	-	3+0+0=3	Program
	AUD 443	Clinical Audiology (2)	Required	AUD 341 AUD 453	2+0+2=4	Program
	AUD 424	Report writing and Counseling in Audiology	Required	-	2+0+1=3	Program
	AUD 454	Implantable devices	Required	-	2+0+1=3	Program



1 st	Code	Level 1	Credit	Code	Level 2	Credit
	ENG 131	Academic English for Health Specialties (1)	3	ENG 132	Academic English for Health Specialties (2)	3
	BIO 105	Human Biology for Health Specialties	2+1+0=3	MME 110	Health Profession Skills	3+0+0=3
	MATH 162	Statistics for Health Specialties	2+1+0=3	PHYS 105	General Physics for Health Specialties	2+1+0=3
	CHEM 104	General Chemistry for Health Specialties	2+1+0=3	BDS 100	Introduction to Health Professions and Ethics	2+0+0=2
	HRS 118	Medical Terminology	2+0+0=2	CPP 100	Fundamentals of Scientific Research	2+1+0=3
	University Mandatory (1)**		2+0+0=2	University Mandatory (2)**		2+0+0=2
				University Elective (1)***		2+0+0=2
	Total		16	Total		18
2 nd	Code	Level 3	Credit	Code	Level 4	Credit
	University Elective (2)***		2+0+0=2	University Elective (3)***		2+0+0=2
	HRS 111	Human Anatomy and Physiology	3+1+0=4	University Elective (4)***		2+0+0=2
	HRS 114	Emergency Life Support	2+1+0=3	AUD 211	Neurology of hearing and balance	2+1+0=3
	HCS 201	Introduction to Hearing and Speech Sciences	2+1+0=3	AUD 212	Anatomy and Physiology of the Hearing and Balance Mechanisms	2+1+0=3
	HCS 202	Introduction to Psychology	3+0+0=3	AUD 213	Psychoacoustics and Sound Perception	2+1+0=3
	HCS 203	Human Growth & Development	2+0+0=2	AUD 225	Speech and Language Development	2+1+0=3
	Total		17	Total		16
3 rd	Code	Level 5	Credit	Code	Level 6	Credit
	HEP 331	Communication Skills for Health Care Professionals	2+1+0=3	HEP 332	Professionalism and Ethics in Health care Practices	2+0+0=2
	AUD 316	Pathophysiology of Hearing Disorder	3+1+0=4	HRS 116	Biostatistics	2+1+0=3
	AUD 327	Psychosocial Aspects of Hearing loss	2+0+0=2	AUD 351	Aural Rehabilitation	2+1+0=3
	AUD 331	Audiology I	2+1+0=3	AUD 344	Audiology II	2+1+1=4
	AUD 341	Electrophysiologic Tests	2+1+1=4	AUD 332	Pediatric Audiology	2+0+1=3
				AUD 342	Pathophysiology of Balance Disorder	2+1+0=3
	Total		16	Total		18
4 th	Code	Level 7	Credit	Code	Level 8	Credit
	HCS 481	Research Project 1	3+1+0=4	HCS 482	Research Project 2	0+2+0=2
	AUD 433	Clinical Audiology (1)	2+0+2=4	AUD 426	Medical Aspects of Communication Disorders	3+0+0=3
	AUD 452	Amplification and Assistive Listening Devices	2+1+0=3	AUD 443	Clinical Audiology (2)	2+0+2=4
	AUD 453	Vestibular assessment and management	2+1+1=4	AUD 424	Report writing and Counseling in Audiology	2+0+1=3
	AUD 434	Hearing Screening	2+0+1=3	AUD 454	Implantable devices	2+0+1=3
	Total		18	Total		15
5 th	Internship					
	AUD 591	12 months				



Internship

Definition of the internship year

After fulfilling the mandatory credit hours for graduation, students of the Audiology and Balance Program are required to complete a compulsory twelve-month internship. This internship is an integral part of the college's graduation criteria, and successful completion of this period, along with obtaining a professional license, is a prerequisite for practicing the audiology and balance profession.

Objectives of the internship year

The objective of internship training for the Audiology and Balance program is to provide interns with hands-on, real-world experience in the field. Through internships, interns can apply the theoretical knowledge they have gained in their coursework to actual clinical settings. This year is intended to help them develop essential clinical skills, which include but not limited to conducting hearing and vestibular assessments and management, fitting hearing aids, and counseling patients. Moreover, internships expose interns to diverse range of patient cases, fostering a deeper understanding of the complexities of hearing and balance disorders. Ultimately, the goal is to prepare audiology students for their future careers as competent and compassionate professionals in the field of audiology.

The Program Internship Manual consists of the following information:

- Selection of training sites
- List of sites
- Course Learning Outcomes (CLOs) of the internship year and assessment methods
- Field supervisor responsibilities



- Interns' responsibilities
- Program internship coordinator's responsibilities
- Attendance and absence
- Extension of clinical training
- Request for change of rotation
- Professionalism and Discipline
- Forms

Please refer to the link below for the Program Internship Manual details
[Joint Training Manual](#).

Contact information of the Training and Internship Unit:

Location	Email	Unit Secretary		
Building 240 2nd floor Training and Internship Unit	Chrs-tu@pnu.edu.sa	Haya Albishi	Dalal Alsulaiman	Ibtisam AlNashwan
		011 824 1362	011 824 1359	011 824 0788



Academic Advising

The Academic advising unit includes supervising the college's academic advisory procedures, coordinating schedule registrations for students encountering difficulties, and serving as a focal point between academic departments and the Admission and Registration Deanship.

What is academic advising?

It is a form of counseling that aims to support students, particularly newcomers, in achieving their goals by understanding the study plan's requirements.

Counseling objectives:

1. Orienting new students to university life.
2. Assisting students in making informed choices regarding their academic and professional futures to maximize their university experience.
3. Streamlining administrative procedures to ensure prompt, high-quality services aligned with the institution's standards.
4. Monitoring and supporting students' academic progress, particularly those facing challenges, to enhance their performance.
5. Supporting students in achieving their educational and career aspirations.
6. Guiding students in creating a tailored study plan that aligns with their objectives, to be discussed later with an academic advisor.
7. Providing guidance on self-assessment of progress towards set goals.
8. Encouraging students to take responsibility for their decisions, fostering academic skills and self-confidence.
9. Supplying students with accurate information about university programs, policies, and regulations.



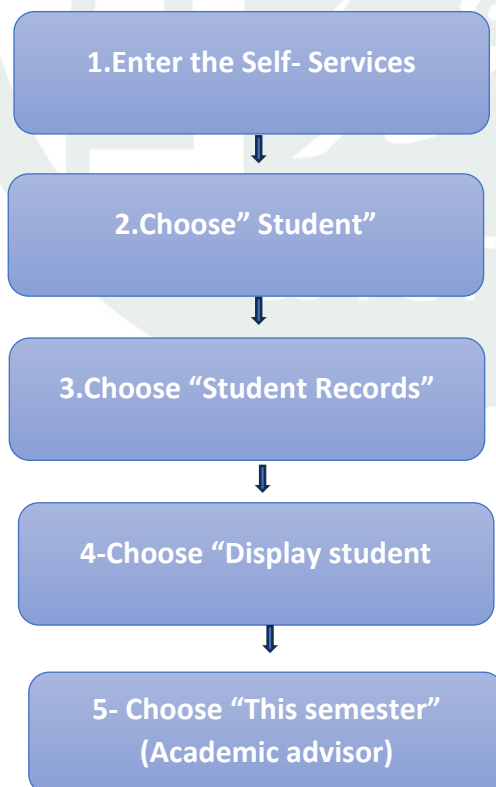
Academic advisor:

Throughout the regular meetings the academic advisor:

1. Provide students with guidance during the registration process, including prerequisites, minimum and maximum course registration (study load), and creating a study schedule.
2. Explain the requirements for graduation, encompassing the requirements of the university, college, and major.
3. Provide insights into policies regarding withdrawal, attendance, probation, deferral, and academic interruption.
4. Make referrals to a social counselor when deemed necessary.
5. Refer students who raise concerns about social or psychological issues to the College's Social and Psychological Unit, ensuring the confidentiality of the student's information and supplying them with relevant contact information.

The student can identify her academic advisor's name through:

- 1- Academic advising billboard on banner
- 2- Academic student account by using the following steps:





Contact information of the Academic Advising Unit in the college:

Location	Email	Unit Secretary
Building 240, 2nd floor	Chrs-ag@pnu.edu.sa	Haya Aldosary
		0118240546

The Psychological and Social Counseling Unit

- The aim of this unit is to provide both psychological and social support for students and help them overcome any stress that may negatively impact their mental health and academic success.
- Student confidentiality is always respected following PNU policy on student's privacy.
- Services provided by the unit includes psychological and social consultation. Appointments can be arranged through email or referral by the student's academic advisor to provide necessary guidance/support.

Contact information of the unit:

Location	Email	Social Workers	
Building 240 Ground floor Student Services Unit	Chrs-ss@pnu.edu.sa	Manal Alnasser	Khulod Alfadhli

For more details, please refer to [Students' Guidance and Counselling Services Manual](#).



Grading System

1. Student performance in courses is assessed through a variety of methods, including tests, assignments, research projects, presentations, practical examinations, simulations, and other activities that reflect their progress in the course.
2. Student grades are tracked in the academic record, a document that displays their academic advancement, encompassing registered courses per semester, credit hours, obtained grades, semester averages, and cumulative grade averages.
3. The grades achieved by students in each course are computed using a grading scale of (5) points, to be as follows:

Grade	Garde	Grade weight	Percentage
A+	Exceptional	5	95-100
A	Excellent	4.75	90 to less than 95
B+	Superior	4.5	85 to less than 90
B	Very good	4	80 to less than 85
C+	Above average	3.5	75 to less than 80
C	Good	3	70 to less than 75
D+	Highly pass	2.5	65 to less than 70
D	Pass	2	60 to less than 65
F	Failed	1	Less than 60
IP	Incomplete		
IC	In progress		
W	Withdrawal		
DN	Withdrawal with excuse		



Learning Environment Support

Students often face various challenges, from academic demands like studies, exams, clinical training, and field visits to juggling extracurricular activities and social lives. If you encounter difficulties, please understand that you're not alone, and support is available. You can seek assistance from multiple sources:

- Approach your instructor or professor for guidance in comprehending course material, accessing additional resources, and addressing your weaknesses.
- Consult with your academic advisor to resolve academic issues and receive referrals for social concerns if necessary.
- If your concerns persist, you may head toward the program director. If your concerns persist, go to the head of the department.

It is crucial to recognize that there are people genuinely concerned about your success and willing to help. Don't hesitate to reach out if you're facing challenges.



Breaches of Academic Integrity

A student will be penalized if she engages in unethical practices to succeed, such as plagiarism.

Plagiarism involves taking another person's words or ideas and presenting them as your own, including materials downloaded from the internet or the work of other students.

Examples of plagiarism:

1. Using another person's work and incorporating it into your own without citing the source or indicating that the text is quoted from another source.
2. Using another person's ideas, images, or any creative work without citing the source.
3. Paraphrasing another person's work or summarizing it without citing the source.
4. Copying content from websites without acknowledging the online source or using quotation marks.
5. Submitting work as if it is entirely your own when it is actually a collaborative effort without noting the collaboration.
6. Submitting certified copies or creative products without citing the original source.
7. Submitting the same assignment in two or more courses without prior permission from the respective instructors



Accepted similarity percentage:

- 25% for students in Levels 3 and 4.
- 20% for students in Level 5 and above.

Penalty:

- **First offense:** The student will receive a written warning and a chance to resubmit the work. However, the total mark will be reduced by 10%.
- **Second offense:**
 - If the plagiarism exceeds the set limit by no more than 10%, the work will receive a 50% reduction in marks.
 - If the plagiarism exceeds the set limit by more than 10%, the work will receive a mark of zero.
- **Third offense:** The student will be referred to the Exam and Assessment Committee.



Program Members

Position	Name	Specialty	Contact
Department	-	-	Chrs-CS@pnu.edu.sa Ext. 39587 & 40497
Head of Department	Dr. Nisreen Alawaji	Speech and language pathology	nnalawaji@pnu.edu.sa
Program Director	Mrs. Hala Sal. Alarfaj	Audiology	HSALarfaj@pnu.edu.sa
Faculty	Dr. Hadeel Fuad. Alsaleh	Audiology	HFAlsaleh@pnu.edu.sa
Faculty	Dr. Rania Ahm. Alkahtani	Audiology	raaAlkahtani@pnu.edu.sa
Faculty	Dr. Reem Yeh. Elbeltagy	Audio-vestibular medicine	ryalbeltagy@pnu.edu.sa
Faculty	Dr. Noura Ibr. Alothman	Audiology	NIAlothman@pnu.edu.sa
Faculty	Dr. Reem Moh. Mulla	Audiology	RMMulla@pnu.edu.sa
Faculty	Mrs. Ghadah Sal. Aljarboa	Audiology	gسالjarboa@pnu.edu.sa
Faculty	Mrs. Ashwaq Nas. Alharthi	Speech & Hearing therapy	asnalharthi@pnu.edu.sa
Faculty	Ms. Arobah Moh. Al Abdulltif	Audiology	AMAlAbdulltif@pnu.edu.sa
Faculty	Mrs. Rawan Ali. AlQarni	Audiology & Balance	raalqarni@pnu.edu.sa
Department secretary	Mrs. Dalal Alabdan	-	daalabdan@pnu.edu.sa
	Mrs. Hessah Alhossain	-	hmalhossain@pnu.edu.sa

Also, you can access the CHRS directory through the following link:

[CHRS Communication Guide](#)



References

- CHRS Manual for Academic Guidance
- CHRS Manual for Student Admissions and Registrations
- CHRS Manual for Students' Guidance and Counseling Services
- CHRS Manual for Study Regulations and Tests for Students

المملكة العربية السعودية
وزارة التعليم
جامعة الأميرة نورة بنت عبدالرحمن
كلية الصحة وعلوم التأهيل